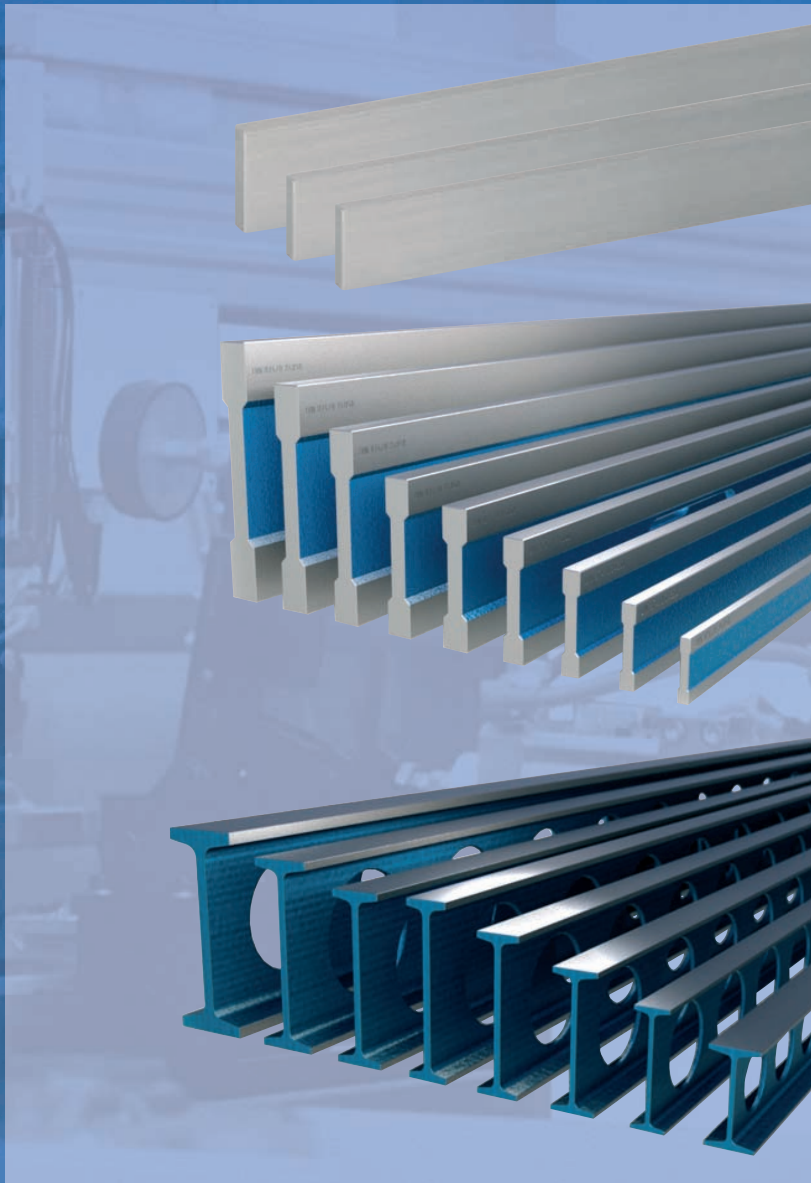


NEW



more than
70
YEARS
quality
in Europe

precision measuring instruments
mechanical - optical - electronical

New straight edges

Revision date: July 2022



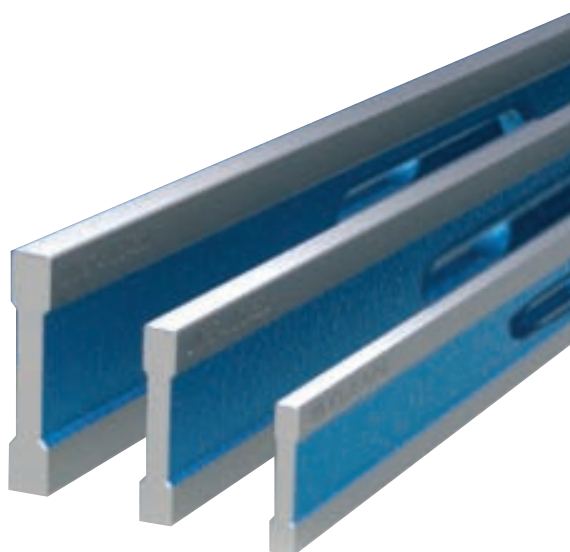
NEW

Bright steel and stainless steel straight edges DIN 874

High quality wooden cases for straight edges are optionally available. Please see the wooden cases for straight edges section for these wooden cases.

- Length: 500 - 3000 mm.
- Class 0 and 1: rectangular cross-section up to length 1500 mm, from length 2000 mm I-shaped with two grip slots.
Class 2: rectangular cross-section.
- Flatness of the measuring faces according DIN 874.
- Delivery with an inspection report.

NEW



Class	Dimensions/mm	Weight/kg	Item No.	Price EUR	Item No.	Price EUR
			Bright steel		Stainless steel	
DIN 874/0	500 x 50x10	2.0	776.569	67.00	776.590	119.00
	750 x 50x10	3.0	776.570	102.00	776.591	170.00
	1000 x 60x12	5.7	776.571	166.00	776.592	293.00
	1500 x 70x15	12.4	776.572	312.00	776.593	501.00
	2000 x 80x15	13.0	776.573*	558.00	776.594*	1,002.00
	2500 x 100x16	22.0	776.574*	803.00	776.595*	1,654.00
	3000 x 120x18	36.0	776.575*	1,238.00	776.596*	2,950.00
DIN 874/1	500 x 40x 8	1.3	776.576	36.90	776.597	65.00
	750 x 50x10	3.0	776.577	65.00	776.598	121.00
	1000 x 50x10	4.0	776.578	77.00	776.599	181.00
	1500 x 60x12	8.4	776.579	144.00	776.600	353.00
	2000 x 70x15	12.0	776.580*	397.00	776.601*	775.00
	2500 x 80x15	17.0	776.581*	529.00	776.602*	1,058.00
	3000 x 100x16	26.0	776.582*	813.00	776.603*	1,871.00
DIN 874/2	500 x 30x 6	0.7	776.583	24.60	776.604	45.00
	750 x 40x 8	2.0	776.584	42.00	776.605	89.00
	1000 x 40x 8	2.5	776.585	51.00	776.606	117.00
	1500 x 50x10	5.8	776.586	98.00	776.607	223.00
	2000 x 60x12	11.2	776.587	151.00	776.608	425.00
	2500 x 70x15	20.6	776.588	284.00	776.609	765.00
	3000 x 80x15	28.2	776.589	444.00	776.610	1,096.00

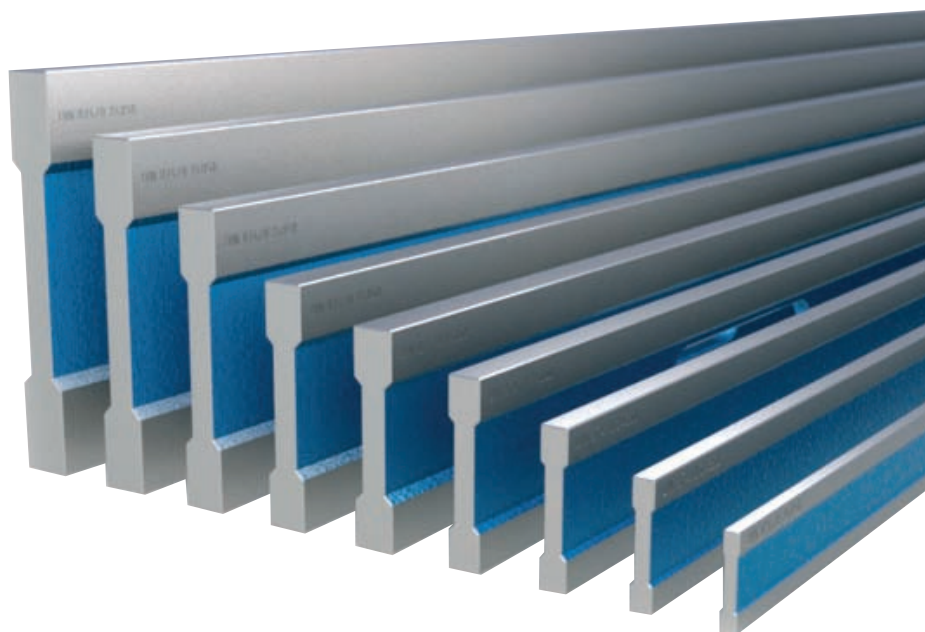
* I-shaped with two grip slots.

NEW

Aluminum straight edges

Light and therefore easy-to-use straight edges. Especially when using longer straight edges this is undoubtedly of great significance. High quality wooden cases for straight edges are optionally available. Please see the wooden cases for straight edges section for these wooden cases.

- Length: 500 - 3000 mm.
- I-shaped, from length 2000 mm with two grip slots.
- With protective coating, thickness: 50 $\mu\text{m} \pm 5$.
- Surface hardness: 500 - 550 HV.
- Highly wear resistant.
- Highly corrosion resistant.
- Highly insulating.
- Accuracy according DIN 874.
- Delivery with an inspection report.

NEW

Item No.	Dimensions mm	Weight kg	Price EUR
DIN 874/0:			
776.611	500 x 60 x 12	0.7	284.00
776.612	1000 x 60 x 12	1.4	529.00
776.613	1500 x 100 x 15	4.3	869.00
776.614*	2000 x 100 x 15	5.9	1,162.00
776.615*	2500 x 100 x 15	7.5	1,427.00
776.616*	3000 x 150 x 20	15.9	2,570.00

* With two grip slots.

Item No.	Dimensions mm	Weight kg	Price EUR
DIN 874/1:			
776.617	500 x 60 x 12	0.7	217.00
776.618	1000 x 60 x 12	1.4	463.00
776.619	1500 x 100 x 15	4.3	747.00
776.620*	2000 x 100 x 15	5.9	1,011.00
776.621*	2500 x 100 x 15	7.5	1,257.00
776.622*	3000 x 150 x 20	15.9	2,130.00
DIN 874/2:			
776.623	500 x 60 x 12	0.7	198.00
776.624	1000 x 60 x 12	1.4	425.00
776.625	1500 x 60 x 12	2.1	614.00
776.626*	2000 x 60 x 12	2.8	822.00
776.627*	2500 x 60 x 12	3.5	1,153.00
776.628*	3000 x 100 x 15	8.7	1,493.00



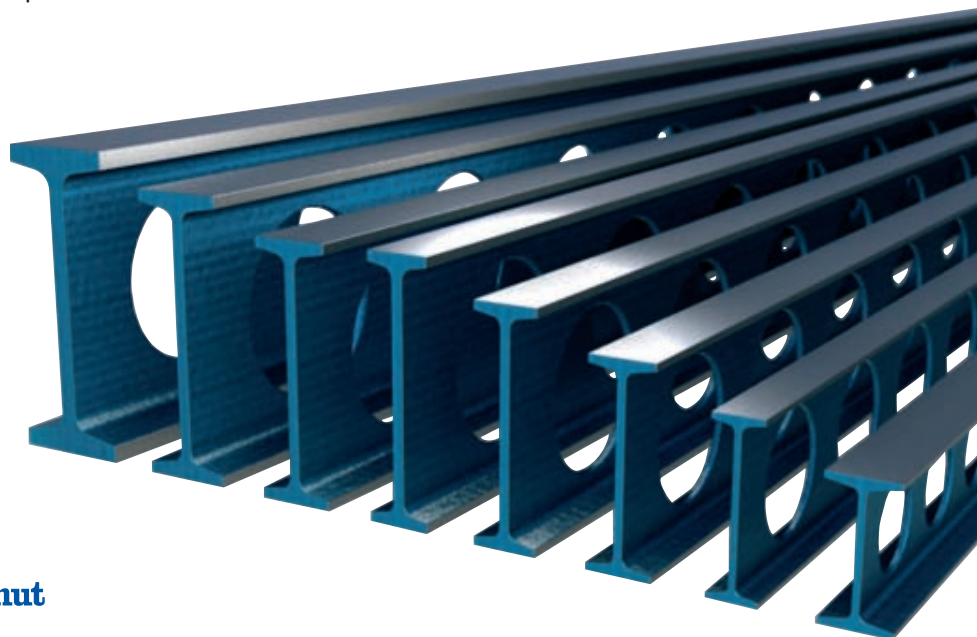
NEW

Steel straight edges for mounting

I-shaped construction with wide and extra wide measuring faces for application of spirit levels.

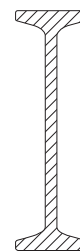
- Length: 500 - 3000 mm.
- Flatness of the measuring faces according DIN 874.
- Delivery with an inspection report.

NEW



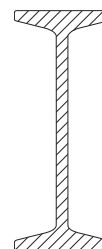
With wide measuring faces

Dimensions/mm	Weight/kg	Item No.	Price EUR	Item No.	Price EUR
		DIN 874/0		DIN 874/1	
1000 x 100 x 30	5.0	776.631	491.00	776.645	416.00
1500 x 100 x 30	7.5	776.632	624.00	776.646	558.00
2000 x 120 x 40	15.0	776.633	813.00	776.647	756.00
2500 x 120 x 40	19.0	776.634	1,134.00	776.648	1,021.00
3000 x 140 x 40	26.0	776.635	1,436.00	776.649	1,285.00



With extra wide measuring faces

Dimensions/mm	Weight/kg	Item No.	Price EUR	Item No.	Price EUR
		DIN 874/0		DIN 874/1	
500 x 80 x 40	2.0	776.636	397.00	776.650	340.00
750 x 80 x 40	3.5	776.637	435.00	776.651	378.00
1000 x 160 x 50	12.0	776.638	643.00	776.652	539.00
1500 x 160 x 50	18.0	776.639	898.00	776.653	747.00
2000 x 160 x 50	24.0	776.640	1,134.00	776.654	973.00
2500 x 160 x 50	30.0	776.641	1,559.00	776.655	1,247.00
3000 x 180 x 60	45.5	776.642	2,460.00	776.656	2,080.00



The listed prices are excl. VAT.

The terms of sales and delivery as mentioned in the catalog Measuring instruments and systems 2021/2022 apply.



Schut Geometrische Meettechniek bv (Schut Geometrical Metrology)

Duinkerkenstraat 21, 9723 BN Groningen
 Duinkerkenstraat 21
 9723 BN Groningen
 The Netherlands
 Tel: +31 (0)50 5 877 877
 E-mail: SchutNL@Schut.com

ISO 9001